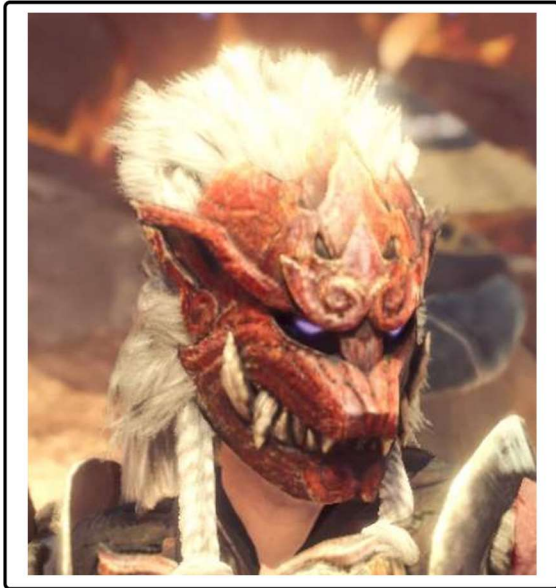


Odogaron Mask (Male)

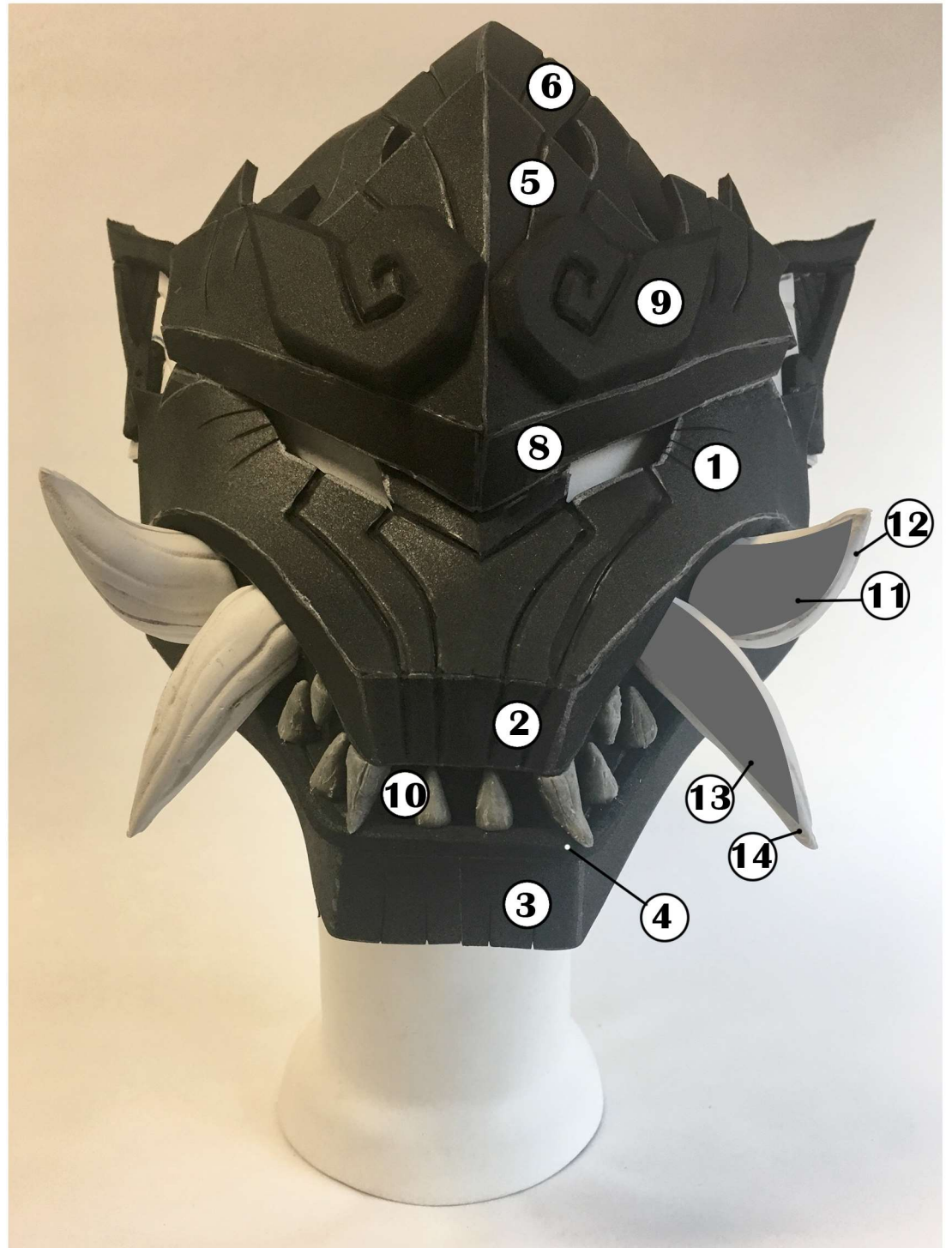


Key

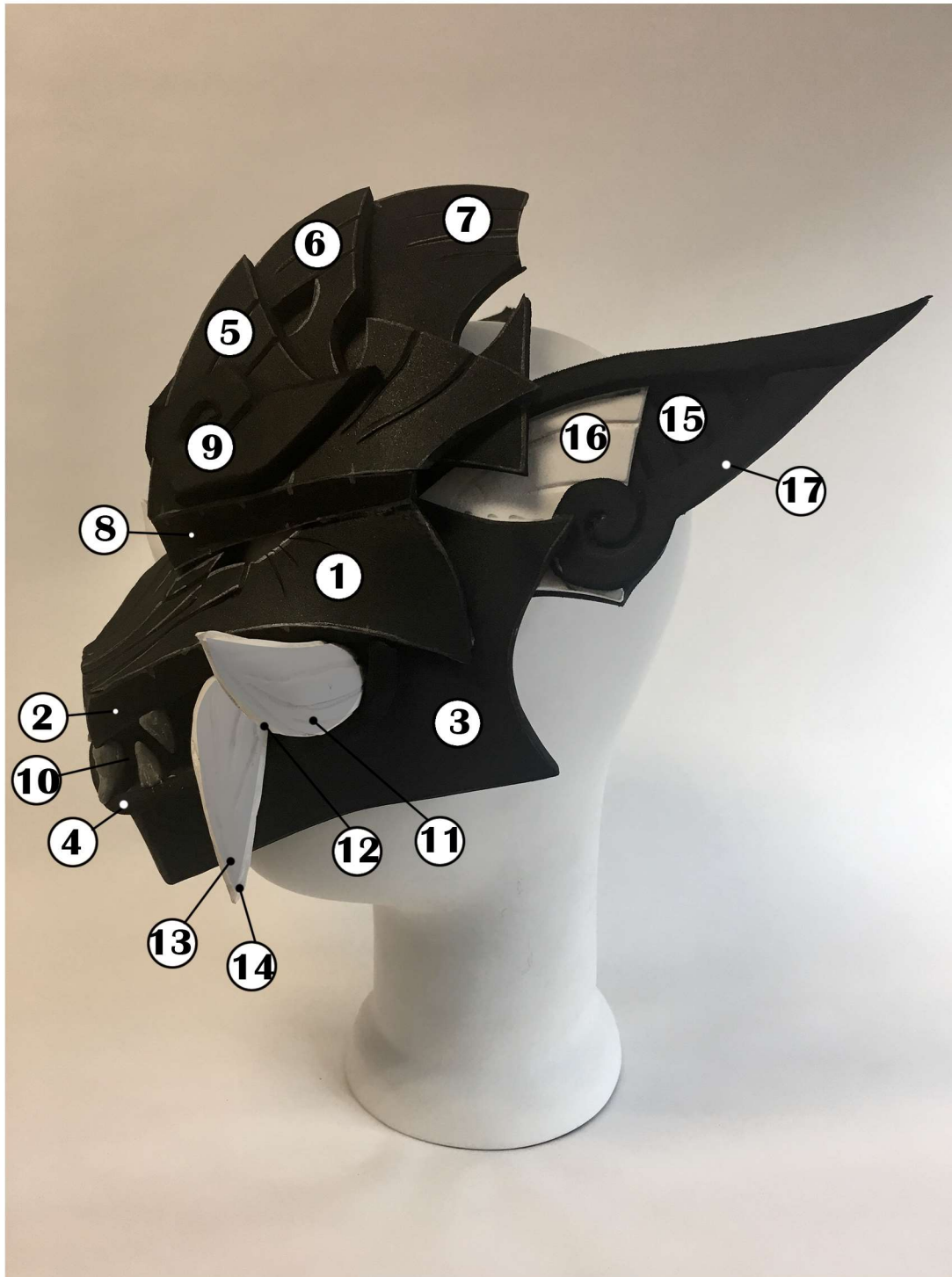
- 2 mm
- 4 mm
- 6 mm
- 10 mm
- detail with soldering iron
- ∨ cut inner bevel
- W cut outer bevel
- Overlapping Piece (Do not cut)
- * Flip piece over and cut as numbered
- ++ Create foam ridge.

Refer to Punished Prop's "The Secret to Creating Perfect Foam Ridges" video on Youtube.

Note: Pattern does not include smaller teeth. It is recommended to sculpt them out of clay or Instamorph



Odogaron Mask (Male)

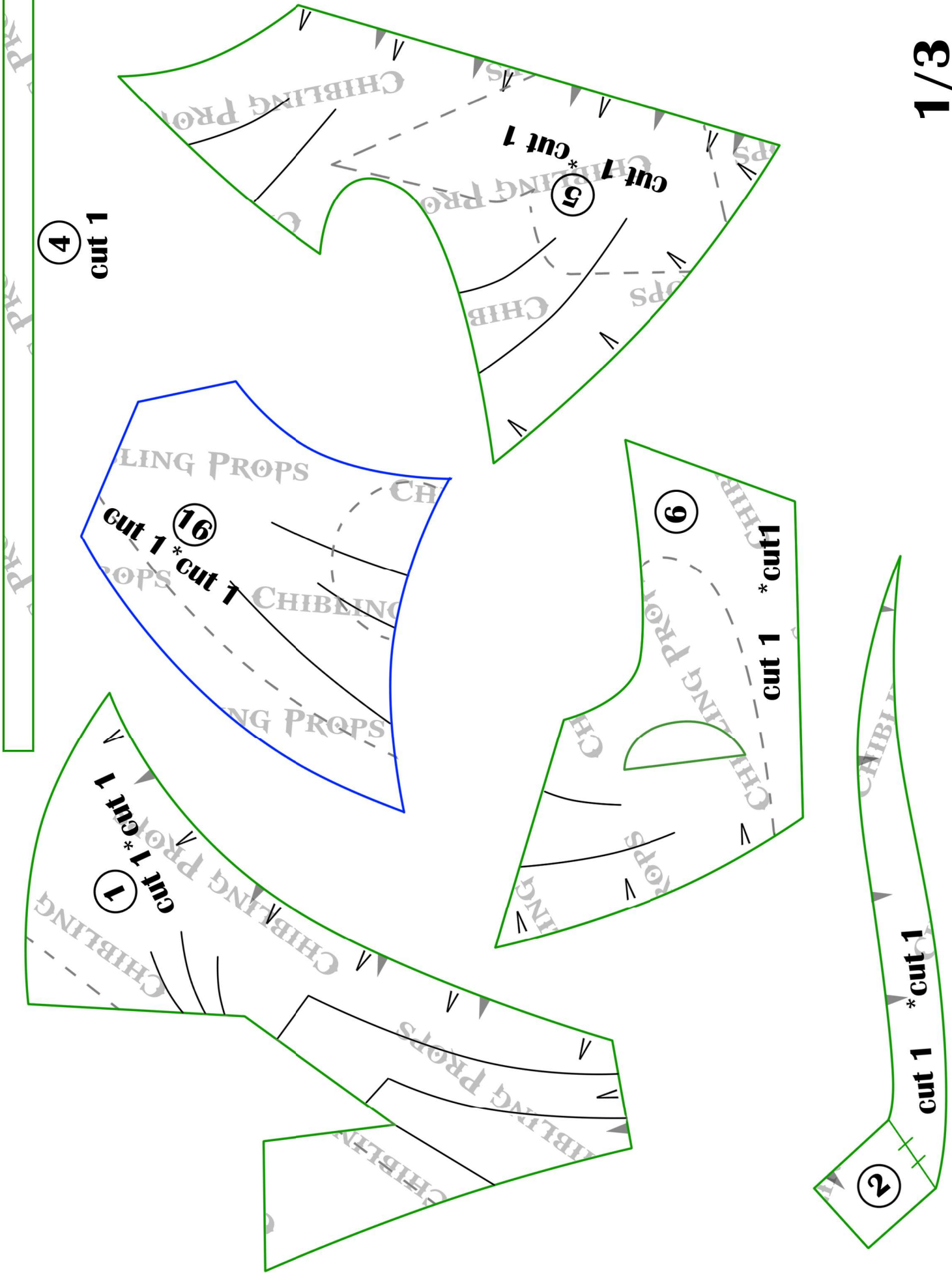


Parts List

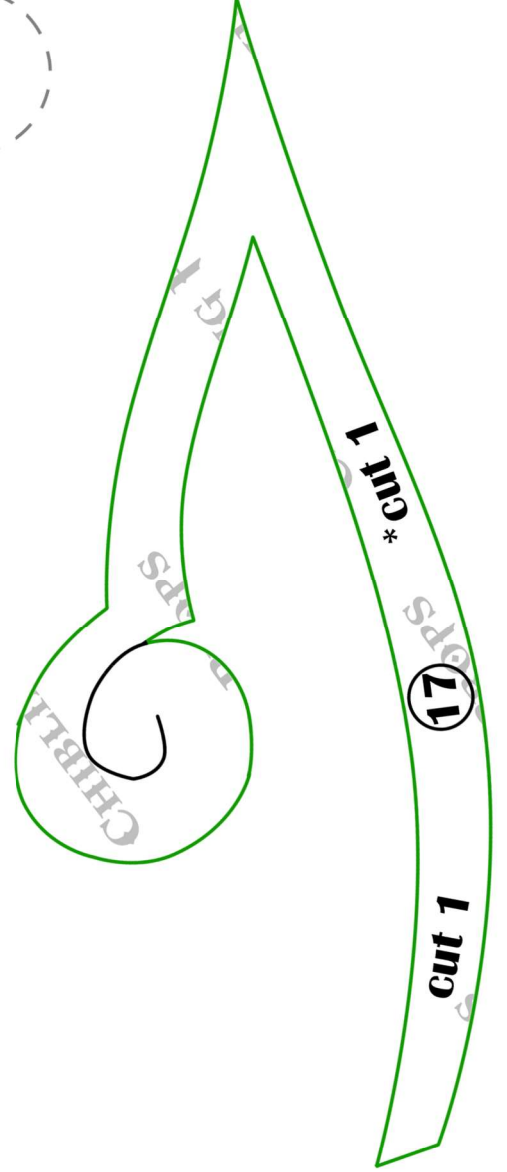
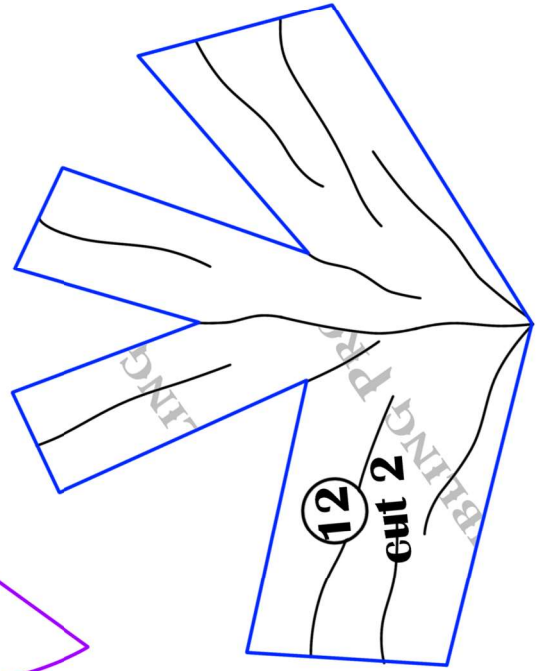
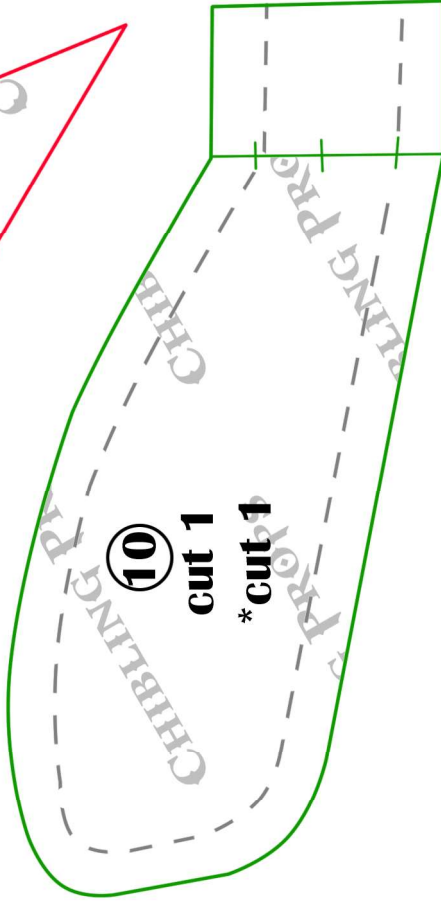
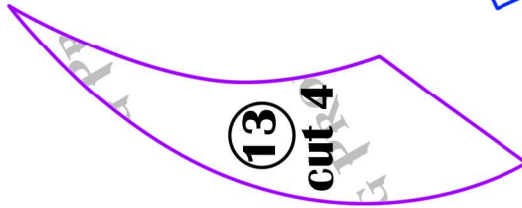
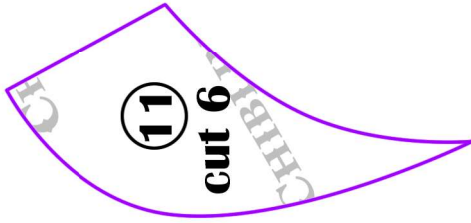
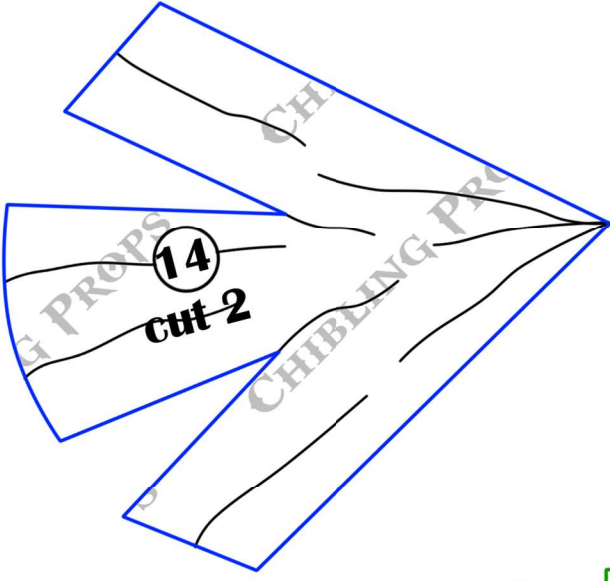
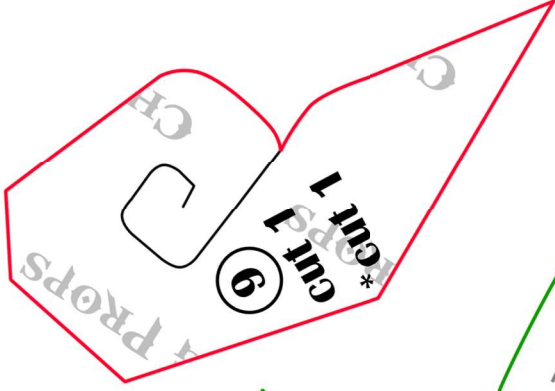
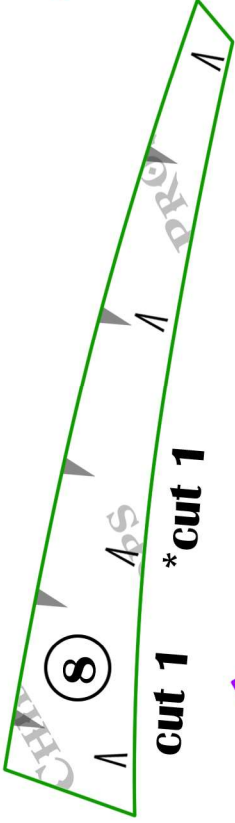
- 1 Main Face Plate
- 2 Main Face Bevel
- 3 Lower Jaw
- 4 Lower Lip
- 5 Forehead Plate Front
- 6 Forehead Plate Mid
- 7 Forehead Plate Back
- 8 Forehead Bevel
- 9 Forehead Swirl
- 10 Mouth Backing
- 11 Back Fang Base
- 12 Back Fang Covering
- 13 Front Fang Base
- 14 Front Fang Covering
- 15 Ear Base
- 16 Ear Inner Piece
- 17 Ear Frame

Assembly for Fangs:

Stack and glue up base pieces face to face. Use rotary tool to shave down the shape until the base matches corresponding dotted circles on pattern. Use soldering iron to etch in details on coverings and wrap base with coverings.



* Round off edges with rotary tool. You may have extra length.



3/3

